



COLLEGE OF ARTS AND SCIENCES

## MUSIC

1-800-334-4111 • WWW.CAMPBELL.EDU

### THE CAMPBELL PROGRAM

We offer five specialized tracks within the Music major:

- Music Education
- Church Music
- Comprehensive
- Composition
- Piano Pedagogy

More than 40 courses—plus numerous ensemble and applied music opportunities—are available to help you develop both your skills and a knowledge of music literature and history.

Our classes are quite small; major courses typically range in size from 10 to 15 students. Our students appreciate working closely with teachers who know them by name and are willing to give them personal attention.

### THE CAMPBELL APPROACH

Most classes are lecture-based, though performance and labs will be an essential part of your experience. Performance on a major and minor instrument or voice is required of every student.

The Music Education and Church Music concentrations also involve a 10-week senior year internship, which provides invaluable hands-on learning. Music Education students teach under the supervision of an experienced music teacher in the public schools. Church Music majors work in a church with a qualified supervising minister.

We sponsor a student chapter of Music Educators National Conference, which is an excellent way to gain insights and contacts into the profession. And you'll have numerous chances to perform publicly with our University Choir, Wind Ensemble, and/or the Pep Band.

### THE CAMPBELL FACULTY AND RESOURCES

Along with their substantial academic credentials, our faculty members are active in various fields of music outside the classroom. We have individuals who perform in concert, play in jazz festivals, adjudicate choruses and festivals, help schools statewide develop music programs, and even record CDs.

You'll find your music teachers are very approachable, and you'll have an advisor from within your concentration who will help you chart a course for reaching your goals.

Our facilities include an electronic music lab and an electronic piano lab with MIDI capability. We also have a computer capability featuring the latest music software for use in classes on theory, electronic music, composition, orchestration, and music education.

For more information about the program contact:  
1-800-334-4111, ext. 1495 • 910-893-1495  
music@campbell.edu

### THE CAMPBELL STUDENT

Our successful majors tend to be bright, eager to learn, passionate about music, and well-prepared in music. Those who enroll with a minimal music background and are unable to read and perform music of some difficulty find this major very challenging; they often need extra time to complete their degree.

There is special scholarship money available to music majors. It is awarded after scholarship auditions: criteria include talent, prospects for growth, and career plans, as well as academic record.

About half our graduates go on immediately to pursue postgraduate studies. They are consistently accepted by excellent schools and seminaries.

Those who enter the job market typically find their Campbell University degree to be a valuable, highly regarded credential. All our spring 2008 Music Education majors who sought teaching positions had obtained them by the fall of 2008. Others served churches, opened piano studios and continued with graduate studies.



### The Campbell Advantage

This is a close-knit department with students and teachers who share a love for music — and a commitment to the work it takes to teach and perform it. In contrast to very large or very small schools, at Campbell you'll enjoy...

- One-on-one personal attention, along with an extensive selection of courses and facilities.
- An appreciation for music with a broad cultural and historical perspective.
- A university that is distinctively committed to liberal arts education, free enterprise, and our Christian Mission.

## MUSIC: BACHELOR OF ARTS

### Requirements for a Major in Music (CIP 50.0901)

In addition to the general college curriculum, the following courses are required of all music majors on all tracks: MUSC 101, 102, 103, 104, 132, 133, 201, 202, 203, 204, 221, 223, 331, 332, and 432. Students must enroll in a major ensemble (441, 443, or 456) with each semester of major applied study. Total semesters for major applied study vary with each track. Each track requires 2 semesters of minor applied study. The minor applied study for piano majors is determined following consultation with the faculty advisor. The minor applied study for all other majors is piano. Each student must meet the guidelines in proficiency (defined in Handbook of Policies and Guidelines) before the minor applied requirement is satisfied. It may be necessary to take more than 2 hours of minor applied study to meet guideline proficiency requirements. If a student can meet guideline proficiency requirements prior to 2 semesters of minor applied study, the student may opt for another minor applied study. Completion of MUSC 101–104 eliminates four hours of the natural science requirement of the General College Curriculum. Additional completion of music 331, 332 and 432 with a major research paper eliminates 3 hours of the English literature requirement of the General College Curriculum. Course exemption is available in Music Theory through advanced placement testing. However, students who place beyond MUSC 101, 103, 201 or 203 must substitute each exempted course with MUSC 291, 302 401 or 402 in observance with prerequisites.

### Requirements for a Major in Music Education

The requirements include the following music courses in addition to those required of all music majors: MUSC 263, 264, 265, 266, 267, 420, 421, and 453. Seven semesters of major applied study culminating with a half recital in the seventh semester are required. Student teaching is required the eighth semester. Students must also complete the Professional Education sequence in the School of Education. Total number of hours: 144 1/2.

### Requirements for a Major in Church Music

The requirements include the following music courses in addition to those required of all music majors: MUSC 267, 326 (keyboard majors only) or 327 (instrumental or voice majors only), 427, 428, 429, 437, 438, and 457; RELG 125, 202, 212, 222, 224, and 226. Seven semesters of major applied study culminating with a half recital in the seventh semester are required. A practicum in Church Music Ministry is required in the eighth semester. Total number of hours: 130.

### Requirements for a Major in Composition

The requirements include the following music courses in addition to those required of all music majors: MUSC 263, 264, 265, 266, 267, 291, 302, 391, 392, 401, 402, 491, and 492. Six semesters of major applied study culminating with a half recital in the sixth semester are required. Additionally, enrollment in a major ensemble (441, 443, or 456) in the seventh and eighth semesters, and a half composition recital in the eighth semester are required. Total number of hours: 128.

### Requirements for a Major in Comprehensive Music curriculum

The requirements include the following music courses in addition to those required of all music majors: MUSC 267, 302, 401, 402, and 461. Course of study requires 12 hours of free electives. Eight semesters of major applied study culminating with a full recital in the eighth semester are required. Total number of hours: 128.

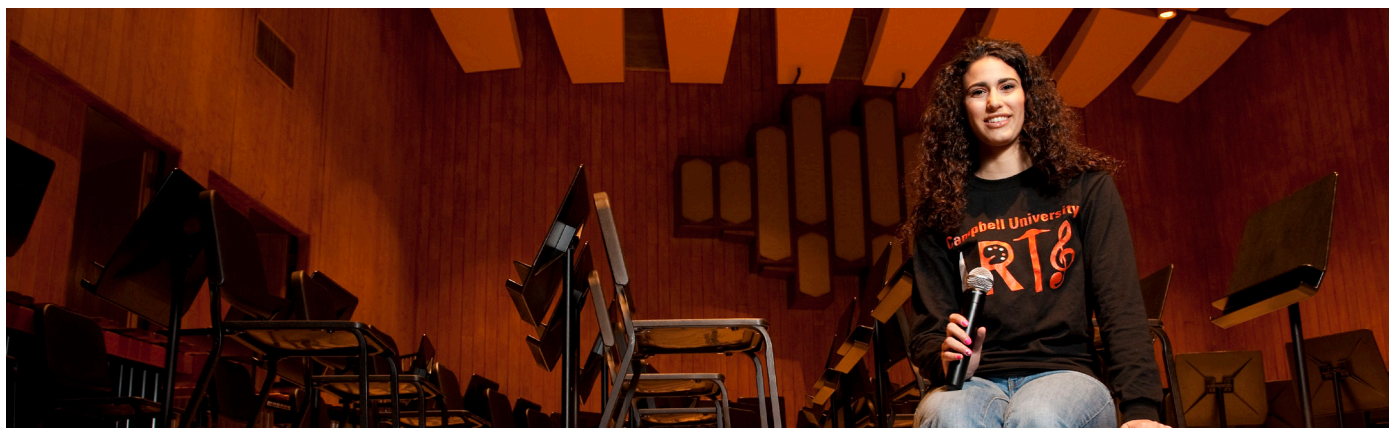
### Requirements for a Major in Piano Pedagogy

The requirements include the following music courses in addition to those required of all music majors: MUSC 302, 328, 329, 402, 416, 417, 421, 435, and 461. Eight semesters of major applied study culminating with a half recital in the eighth semester are required. Total number of hours: 128.

### Requirements for a Minor in Music

A minor in music includes MUSC 101, 102, 132, 133, 221, four hours of ensemble, three hours of applied music study, performance on two informal recitals, and one additional three-hour music lecture course. MUSC 131 may be substituted for MUSC 132 and 133.

*Suggested Curriculum outlines for each major in music are available from the Division Office of Fine Arts.  
Call 910-893-1495 for specific information.*



*The major requirements outlined within this brochure are intended as a guideline, and the curriculum outlines are only a sample. The most recent copy of the University's Undergraduate Studies Bulletin is the official source related to curriculum guidelines. It is the student's responsibility to consult with his/her academic adviser.*

# CURRICULUM OUTLINE

## GENERAL COLLEGE COURSE REQUIREMENTS

<u>ENGLISH</u>			<u>HISTORY</u>		
		<u>HRS</u>			<u>HRS</u>
ENGLISH COMP I	ENGL 101	3	WESTERN CIV I	HIST 111	3
ENGLISH COMP 2	ENGL 102	3	WESTERN CIV II	HIST 112	3
LITERATURE	ENGL LIT	3			
LITERATURE	ENGL LIT	3			

<u>RELIGION</u>			<u>MATH</u>		
		<u>HRS</u>			<u>HRS</u>
INTRO TO CHRISTIANITY	RELG 125	3	COLLEGE ALGEBRA	MATH 111	3
RELIGION ELECTIVE	RELG	3	MATH ELECTIVE		3

<u>SCIENCE</u>			<u>FOREIGN LANGUAGE</u>		
		<u>HRS</u>			<u>HRS</u>
SCIENCE ELECTIVE		4	FOREIGN LANGUAGE	101	3
SCIENCE ELECTIVE		4	FOREIGN LANGUAGE	102	3
			FOREIGN LANGUAGE	201	3
			FOREIGN LANGUAGE	202	3

<u>SOCIAL SCIENCE</u>			<u>PE</u>		
		<u>HRS</u>			<u>HRS</u>
GENERAL PSYCHOLOGY	PSYC 222	3	LIFETIME WELLNESS	PE 185	2
SOCIAL SCIENCE ELECTIVE		3	PE ACTIVITY	PE 111	1

<u>CUW</u>		
		<u>HRS</u>
CU WORSHIP	CUW 100	0.5
CU WORSHIP	CUW 100	0.5
CU WORSHIP	CUW 200	0.5
CU WORSHIP	CUW 200	0.5

*English Comp* – Students with an SAT verbal score below 450 will be enrolled in ENGL 100; 450-699 students will be enrolled in ENGL 101; 700 and above with at least a “B” average in high school students will be enrolled in ENGL102.

*English Literature* - The ENGL LIT requirement may be satisfied by completing any two of the following literature courses: ENGL 201, 202, 203, 204, or 205, or a 300 level Foreign LANG LIT.

*Foreign Language* - Students are required to pass a 202 level Foreign Language Course.

*Social Science* - Courses that meet this requirement may be selected from Criminal Justice, Economics, Geography, Political Science, History, Philosophy, Psychology and Sociology.

*Science Elective* – Can be chosen from any 4-hour science course with lab.

*Electives* - Any course may be used for an elective; however, carefully chosen electives will allow for a minor.

# CURRICULUM OUTLINE

## MUSIC COURSE REQUIREMENTS

<u>ALL MUSIC MAJORS</u>			<u>MUSIC EDUCATION MAJORS</u>			<u>ALL EDUCATION MAJORS</u>		
		<u>HRS</u>			<u>HRS</u>			<u>HRS</u>
INTRO TO THEORY	MUSC 101	2	WOODWIND METHODS	MUSC 263	1	INTRO TO EDUCATION	EDUC 221	3
INTRO TO SIGHTSING/EAR TRAIN	MUSC 102	2	BRASS METHODS	MUSC 264	1	PSYCHOLOGY APPLIED TO ED.	EDUC 223	3
ELEMENTARY TONALITY	MUSC 102	2	STRING METHODS	MUSC 265	1	INSTRUCT TECH. FOR K-12	EDUC 230	3
SIGHTSING/EAR TRAINING	MUSC 104	2	PERCUSSION METHODS	MUSC 266	1	ADOLESCENTS W/ EXCEPTIONS	EDUC 331	3
MUSIC LITERATURE I	MUSC 132	1	MUSIC METH IN SEC. SCH	MUSC 420	3	HUMAN DIVERSITY	SOCI 345	3
MUSIC LITERATURE II	MUSC 133	1	MUSIC METH IN ELEM SCH	MUSC 421	3	PRAXIS		
ADVANCED TONALITY I	MUSC 201	2	MUSIC METH & MATERIAL	MUSC 453	1.5	VOCAT INSTRUCT TECHNIQ.	EDUC 430	2
ADVANCED TONALITY II	MUSC 203	2	MAJOR ENSEMBLE		1	PRACTICUM	EDUC 432	1
ADVANCED SIGHTS/EAR TRAIN I	MUSC 202	2	MAJOR ENSEMBLE		1	TEACHING LITERACY	EDUC 441	3
ADVANCED SIGHTS/EAR TRAIN II	MUSC 203	2	MAJOR ENSEMBLE		1	CURRICULUM TRENDS	EDUC 440	2
CONDUCTING	MUSC 221	2	MAJOR ENSEMBLE		1	STUDENT TEACHING	EDUC 458	8
ADVANCED CONDUCTING	MUSC 223	2	MAJOR ENSEMBLE		1			
INTRO TO ELECTRONIC MUSIC	MUSC 267	1	MAJOR ENSEMBLE		1			
MUSIC HISTORY TO 1750	MUSC 331	3	MAJOR ENSEMBLE		1			
MUSIC HISTORY 1750-1900	MUSC 332	3	MAJOR APPLIED		2			
20TH CENTURY MUSIC	MUSC 432	3	MAJOR APPLIED		2			
MINOR APPLIED		1	MAJOR APPLIED		2			
MINOR APPLIED		1	MAJOR APPLIED		2			
PIANO GUIDELINES			MAJOR APPLIED		2			
SENIOR RECITAL			MAJOR APPLIED		2			

*Music Literature:* Upon consultation with your adviser, MUSC 131 may be substituted for MUSC 132 and MUSC 133

*Minor:* Piano majors may choose any applied minor other than piano. Minor applied study for non-piano majors must be piano unless they can pass the piano guidelines proficiency without applied study. If so, they may opt for another applied minor.

*Piano:* Music majors must enroll in applied piano study until guidelines proficiency is completed.

*Methods:* Method courses are rotated every four semesters. Students should begin the sequence in their sophomore year.

*Praxis:* Students with an SAT score of 1100 or higher are exempt from PRAXIS 1. Students with a SAT math score of 550 or higher are exempt from the math portion of PRAXIS 1, and students with an SAT verbal score of 550 or higher are exempt from the verbal portion.